

Certificate

Certified Passive House component

for cool, temperate climate, valid until 31.12.2018

Passive House Institute
Dr. Wolfgang Feist
64283 Darmstadt
GERMANY

Category: **Facade anchor**
 Manufacturer: **Hilti Deutschland AG**
86916 Kaufering, GERMANY
 Product name: **FOX HT**

The following criteria were used in awarding this certificate:

Efficiency Criterion

In two typical applications*, the construction fulfills the requirements of

$$\Delta U_{WB} \leq 0.010 \text{ W}/(\text{m}^2\text{K})$$

Comfort Criterion

The inner surface must be warm enough to prevent mould as well as uncomfortable down-draught and radiation losses.

$$\theta_{i,\min} \geq 17^\circ\text{C}$$

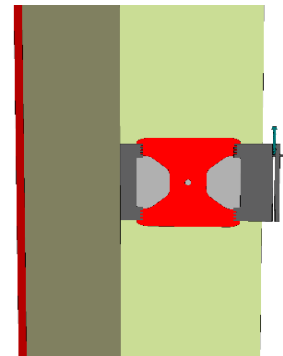
Thermal data of the certified component

Konsole FOX T	thermal bridge coefficient	minimum inner surface temperature
	χ [W/K]	$\theta_{i,\min}$ [°C]
FOX HT-280_11	0.0033	19.44

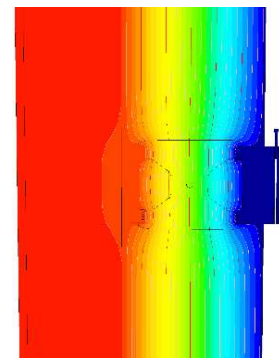
Validation reference buildings	Row House	School building
ΔU [W/m ² K]	0.006	0.006

* The criterion has been validated with two representative buildings, a row house and a school building.

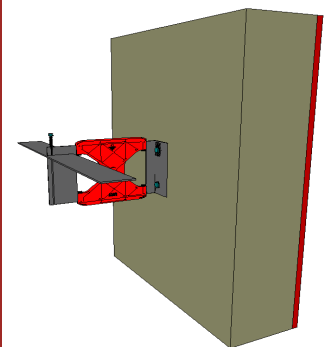
www.passivehouse.com



Representation of the FOX HT-280_11



Isothermal map of the FOX HT-280_11



Representation of the FOX HT-280_11



**CERTIFIED
COMPONENT**

Passive House Institute