

General agreement regarding the

Terms of participation for the COMPONENT AWARD 2015

between

Company

and

Street, number

Passive House Institute

ZIP, City

Rheinstraße 44/46

State

64283 Darmstadt

Germany

Building on the success of the first COMPONENT AWARD relating to windows which was presented this year at the 18th International Passive House Conference in Aachen, the Passive House Institute has announced the COMPONENT AWARD 2015 for high quality and low-cost Passive House components. The second COMPONENT AWARD also relates to windows, but this time in the context of step-by-step refurbishment of existing buildings. The Award will be presented at the 19th International Passive House Conference to be held in Leipzig (17 - 18 April 2015). The Award aims to promote the manufacture and propagation of Passive House components and to demonstrate practicable innovative solutions.

Performance requirements and basis of evaluation

The windows of an apartment building are to be replaced in 2015. The exterior plaster of the building will be renewed in 2025 and thermal insulation applied at the same time. The participant will offer a sample window with opening casements and shading elements (motorised with manual control) at retail prices, delivery and assembly inclusive. Any necessary changes to the installation of the window or subsequent work in the context of the facade insulation in 2025 should be included in the price and stated separately. The quotation and thermally relevant parameters shall be entered by the participant into an Excel interface provided by the PHI. The installation situation will be evaluated using this, together with the information regarding the costs for investment and energy as provided by the participant.

This evaluation will include the following:

1. the life-cycle costs determined using the Excel interface with 40 %
2. with 20% for each of the aspects practicability, aesthetics and innovation, evaluated by a jury consisting of architects, experts and specialist press members.

Participation

- There is no entitlement to participation. The PHI reserves the right to reject applications.
- All Passive House components with valid certification issued by the Passive House Institute may be entered in the competition. The basic variant of the component must be available on the market, innovative fastening methods and shading elements are expressly encouraged. These do not necessarily have to have reached the market availability stage or have been tested, but the condition for calculability of the costs will still apply.
- The deadline for submitting entries is 01.02.2015. All thermally relevant parameters must also be provided in certified form by this date. A signed certification contract must be provided in case of ongoing certification procedures. This implies that the thermally relevant parameters have been validated by the PHI and that certifiability is given.
- The COMPONENT AWARD applies for the cool, temperate climate zone. Distinction will be made according to the construction types wood, wood/aluminium, aluminium and PVC.
- Assessment of a category (construction type) will take place if there are three or more participants per category. The first prize will be awarded with three or more participants, a second prize will be awarded if there are 4 or more participants, and a third prize will be given if there are 5 or more participants.
- In order to adjust the price differences in different countries, the quotation will be calibrated for Germany using the Consumer Price Index. This will take place in the Excel interface.
- Following the COMPONENT AWARD, a publication will be prepared by the PHI which will be made available on the PHI website for downloading free of charge. The prize-winners will be mentioned with their names and ranking; the names of other participants will also be mentioned upon request. This documentation will include all relevant results including the quoted prices.
- A company may also participate with several certified components, but each component may only be submitted once.
- Cooperation between window fitters and manufacturers in the field of assembly technology and shading elements is expressly desired.

Offer

- For the installation situations specified in the attachment, you will offer windows with your choice of sun protection including delivery, installation and formation of the airtight layer, the prepared surface the building.
- The quotation will cover the work for the compound insulation system or the reworking of the installation situation respectively when the facade is insulated in 2025. Please assume current prices for this theoretical calculation.
- In addition, please prepare a quotation for the case where the wall will also be insulated in 2015. Optimise the connection situation and the shading elements for this case.
- The window ledges on the inside and the outside will also be renewed. Please include this in your quotation. A window ledge of artificial stone on the inside and aluminium (or equivalent) on the outside should be provided.
- The values stated in the certificate will apply for the glazing thickness and the spacers. The coating can be chosen freely. Data sheets (verification of U and g values) of the installed glazing must be included.
- Scaffolding for the facade and a building crane are available on site and can be used without cost.
- An overall distance of 50 km between the factory and the construction site. The total window area for this contract is 150 m².

Prices

The winning components in each category will receive a special certificate showing the COMPONENT AWARD logo with the category and position achieved, which will be valid until the end of 2016. In addition, the winners will be presented to the participants of the International Passive House Conference. Their components will also be displayed at the stand belonging to the EuroPHit project.

A special certificate valid until the end of 2015 will be issued for the winners of the second and third positions. All winners will be able to use the logo of the COMPONENT AWARD with the category and ranking for their own advertisements for as long as the certificate is valid.

The certificates and a plaque will be publicly presented to the winners at the International Passive House Conference. The participants will be informed of the results of the COMPONENT AWARD in advance.

The participants will be informed of the results of the COMPONENT AWARD in advance in order to make it possible for them to promote the winning component at the accompanying Exhibition of the 19th International Passive House Conference in Leipzig. The parties agree that the ranking will not be disclosed until the award ceremony.

Costs of participation

If thermally relevant parameters for one or more of the required profile cross-sections that have been validated by the PHI are not available, these will be determined by the PHI at the participant's expense. The same applies for the installation situations being evaluated. For this, the PHI will offer special prizes within the framework of the COMPONENT AWARD. The same will apply for manufacturers who decide to have a new product certified for the Component Award. Please contact us for this (benjamin.krick@passiv.de, +49 6151 82699-12). No other PHI-related costs will be incurred by participants.

Acceptation of calculation results performed by other parties may be possible upon consultation.

Rights of use of the Excel tool

The Excel interface is based on algorithms of the Passive House Planning Package Version 9. All rights remain with the PHI. Use of the tool is restricted to the COMPONENT AWARD 2015. The tool may not be transferred to others, sold, or distributed in any other way.

We will be pleased to answer any questions that you may have and will make these available in anonymised form together with our answers on

http://www.passiv.de/de/08_award/08_component_award_2015.htm.

The deadline for questions and responding to these is 15 January 2015. All questions and answers published up to this date will constitute a part of these Conditions for Participation.

All decisions are final.

We wish you much success with participation and look forward to seeing you at the 19th International Passive House Conference in Leipzig.

A handwritten signature in blue ink that reads "Wolfgang Feist".

University Professor Dr. Wolfgang Feist,
Scientific Director of the Passive House
Institute

A handwritten signature in blue ink that reads "Benjamin Krick".

Dr.-Ing. Benjamin Krick,
Chairman of the Component Certifiers
Team at the Passive House Institute

With my signature I accept the Conditions of Participation in the COMPONENT AWARD 2015 as laid out above.

Place, date, signature (name, forename)

Contact person for the COMPONENT AWARD 2015:

Name: _____

E-mail: _____

Telephone: _____

Attached:

- Geometrical definition of the window and the installation in the form of a DWG file

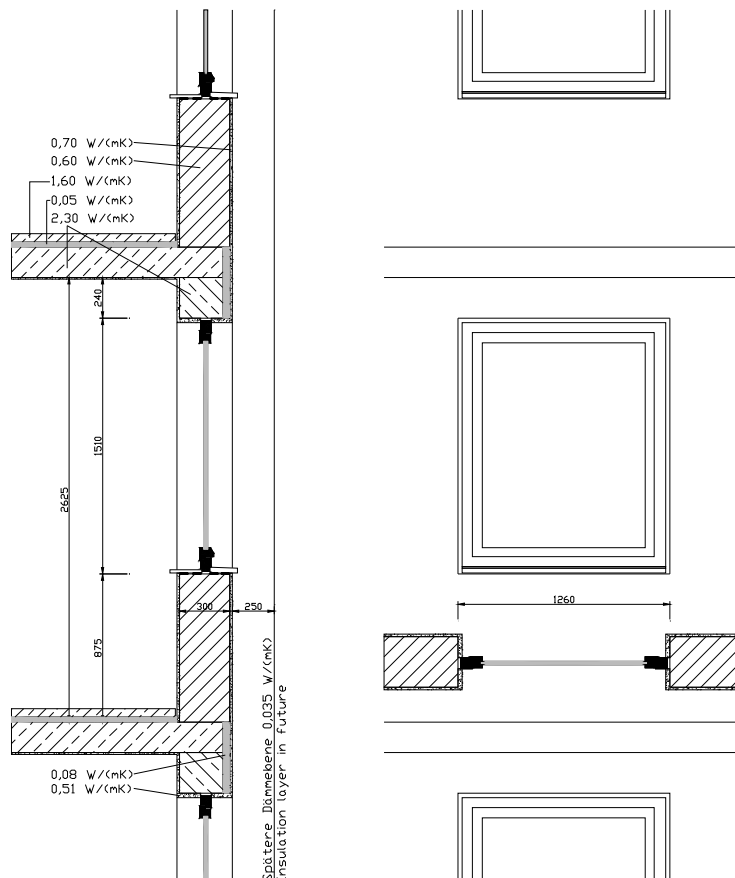


Figure: Geometrical definition of the window and the installation situation

The sole responsibility for the content of this publication lies with the authors. It does not necessarily reflect the opinion of the European Union. Neither the EASME nor the European Commission are responsible for any use that may be made of the information contained therein.